

RIVER DREDGING EXPERT,
15 YEARS PROFESSIONAL PRACTICAL EXPERIENCE!

RIVER



RIVER
HuBei River Machinery Co., Ltd.

📍 Jingnan Avenue, Xintan Town, Honghu City, Hubei, China.

☎ Tel: +86 15926413148

📞 +8615926413148

🌐 <http://www.riverexcavator.com> www.riverexcavator.net

✉ sales@riverexcavator.net



AMPHIBIOUS EXCAVATOR

Product Brochure

Riverdredgingexpert

15 YEARS

PROFESSIONAL PRACTICAL EXPERIENCE!



AMPHIBIOUS EXCAVATOR

// PRODUCT OVERVIEW

Multi purpose excavator for land, water, swamp and deep water projects. River amphibious excavators have been varified and reliable by maketing through years of practical experience.

// PHYSICAL CHARACTERISTICS

UPPER EXCAVATER

Various brands and models available

PONTOON UNDERCARRIAGE

- Optimized design apply for excavators from 5 tons to 40 tons
- Customized solutions according to your requirement of projects



WIDE RANGE OF JOB APPLICATIONS

Silt, swamp, shallow water operations (less than 1.8m depth)

- Pontoon size reduce **30%**, more flexible travelling in swampy terrains, reduce transportation time by **10%**
- Upgraded pontoon material, overall weight is reduced by **10%**, walking is more flexible, and fuel consumption is lower
- Working efficiency increased by **5%**

Deep water operations (2-5 meters)

- Small pontoon size+ bigger size side pontoon, total width increased by **45%**, no rollover risk in deep water.
- Square platform, more safety, minimum working radius increased by **20%**.

APPLICABLE RANGE

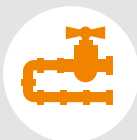
01 Swamp, wetland, water area projects

High efficient and safety operations in pond, river, lake and coastline terrains.



02 Dredging projects

Outstanding dredging performance in soft terrains



03 Environmental services

Efficient landscape and natural environment maintenance.



04 Public relief services

Governmental or fire department flood control, disaster relief operation and maintenance



05 For rental

Used for rental industry, remarkable benefits





EASY TO TRANSPORT

Only one truck is required for short-distance transportation, and the whole machine can be loaded. For long-distance transportation, the chassis needs to be separated and transported, assembly and disassembly takes only 60 minutes



20 years

construction optimized
experience, more suitable for
actual engineering use.

We are a diversified enterprise integrating
design, R&D, and manufacturing.
We combine construction experience and
customer feedbacks into our improvements.
Each optimization is tested by marketing
and approvals from customer. Always aim
to provide better solutions for customers.

Moreover, you can also custom your own
solutions if you need.

Height of chassis is customized

Height of chassis can be modified or
customized according to different construction projects

Track chain made of 40 Cr high strength steel and heat-treated.

Track chains are available in standard
and strength reinforced.

Main pontoon

Designed buoyancy of the pontoon is less
than the weight of the whole, can reach the
bottom for normal operation in shallow water

chain plate use HG785 high strength

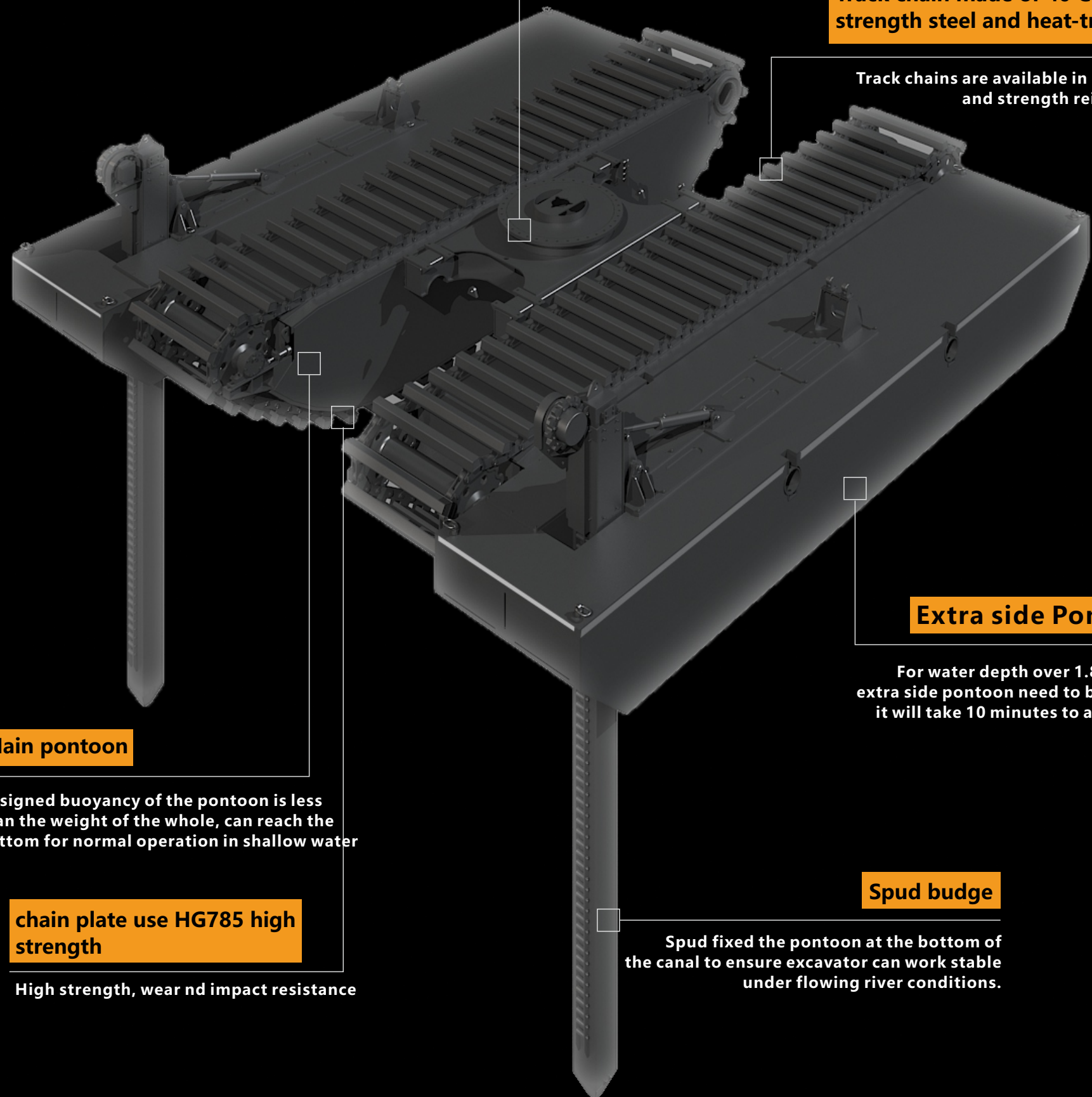
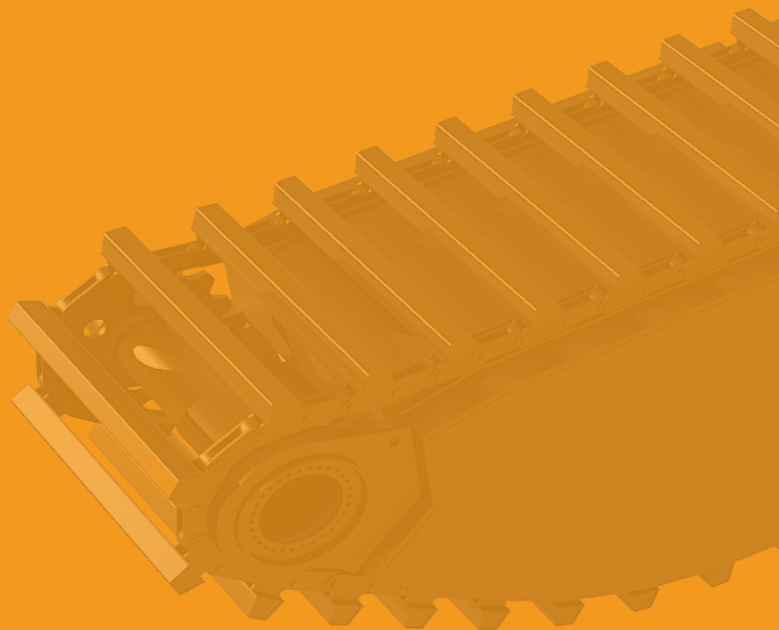
High strength, wear and impact resistance

Extra side Pontoon

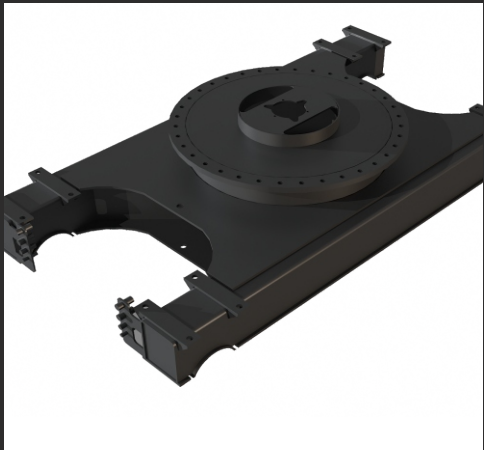
For water depth over 1.8 meters,
extra side pontoon need to be added,
it will take 10 minutes to assemble.

Spud budge

Spud fixed the pontoon at the bottom of
the canal to ensure excavator can work stable
under flowing river conditions.



THE DETAILED PROCESS OF THE PRODUCT



Chassis

The height of chassis can be customized to meet various requirements of construction projects, can be modified according to the original base of excavators.



Chain plated

- Support bars are designed in the chain plate to strengthen the load capacity and reduce the loss on the hard ground
- Increased chain plate, anti-slipped and not easy to bend.
- Size can be customized according to customer's requirement.



Track shoe

Titanium alloy and chromium are optional, lighter and longer life

It can maintain accurate average transmission force, higher transmission efficiency, the chain does not require large tension, the load on the shaft and bearing is small, it will not slip, the transmission is reliable, the overload capacity is strong, and it can better work under low speed and heavy duty conditions.

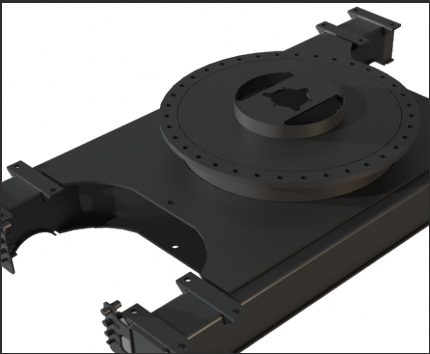


Pontoons

- Two-layer primer, two-layer paint, good anti-rust ability, high value preservation ability
- High strength Q345B steel plate, excellent welding, strong impact resistance, guaranteed wear resistance.
- Wear-resistant strips are added at the chain rail to protect the floating box from damage.

Knock down design convenient for transportation and loading.

60 minutes assembly for whole equipment,8 minutes for extra side pontoon installation.



Chassis



Cross tube



U Shape clips

12mm thickness seamless round tube, for easy assembly from any directions.

Chassis fixed on the cross bar by 8 U-shape clips.

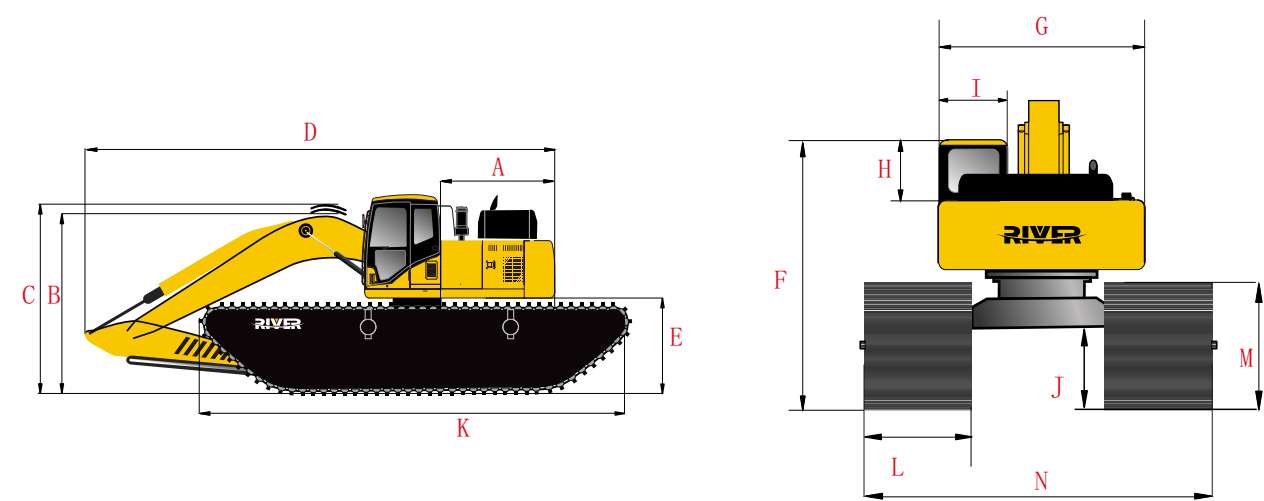
PRODUCT SHOW



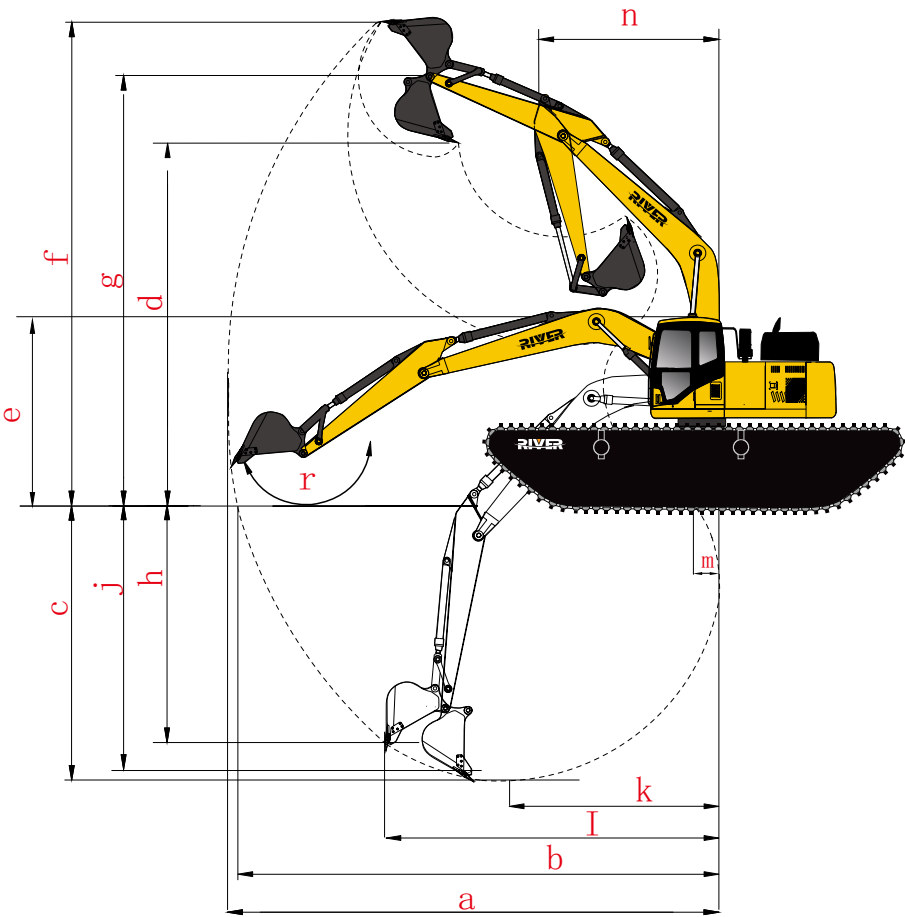
FACTORY SITE VIEW



PRODUCT PARAMETERS



Description	UOM	Code	7-8T	13-15T	20T
Measurements					
Tail turning radius	mm	A	1650	2200	2840
Transport height (to boom top)	mm	B	2660	3300	3350
Transport height (to top of hose)	mm	C	2800	3500	3600
Transportation length	mm	D	7000	9000	10600
Ground clearance of counterweight	mm	E	1300	1800	2000
Total height (to top of cab)	mm	F	3150	3650	3880
Turntable width	mm	G	2100	2450	2800
Cab height (above turntable)	mm	H	1870	1910	1950
Full width of cab	mm	I	1100	1100	1100
Minimum ground clearance	mm	J	865	1158	1278
Single pontoon size	mm	K	5500	7000	7700
Single pontoon width	mm	L	900	1250	1400
Single pontoon height	mm	M	1200	1600	1800
Overall weight	mm	N	3000	3700	4400



Description	UOM	Code	7-8T	13-15T	20T
Operation range					
Maximum digging distance	mm	a	6200	8120	10000
Maximum excavation distance on the ground	mm	b	5900	7900	9600
Maximum excavation depth	mm	c	3535	4706	5310
Maximum unloading height	mm	d	5645	7878	10400
Minimum unloading height	mm	e	5045	5378	6400
Maximum excavation height	mm	f	7570	9478	11600
Maximum height of bucket pin	mm	g	6970	8678	10100
Maximum vertical wall excavation	mm	h	2435	3300	4700
Maximum vertical radius	mm	i	2435	3300	4670
horizontal maximum excavation depth	mm	j	3460	4500	5110
minimumradius	mm	k	810	1200	2200
Minimum digging distance	mm	l	320	530	670
Minimum radius of gyration	mm	n	1620	2200	3050
Bucket extension angle	mm	r	175	175	175