

RIVER DREDGING EXPERT,
15 YEARS PROFESSIONAL PRACTICAL EXPERIENCE!



AMPHIBIOUS EXCAVATOR

PONTOON

RIVER

RIVER

RIVER

RIVER

RIVER

RIVER

RIVER

RIVER



📍 Jingnan Avenue, Xintan Town, Honghu City, Hubei, China.

☎ Tel: +86 15926413148

📞 +8615926413148

🌐 <http://www.riverexcavator.com> www.riverexcavator.net

✉ sales@riverexcavator.net



Riverdredgingexpert

15 YEARS

PROFESSIONAL PRACTICAL EXPERIENCE!



AMPHIBIOUS EXCAVATOR

// PRODUCT OVERVIEW

Multi purpose excavator for land, water, swamp and deep water projects. River amphibious excavators have been varified and reliable by maketing through years of practical experience.

// PHYSICAL CHARACTERISTICS

UPPER EXCAVATER

Various brands and models available

PONTOON UNDERCARRIAGE

- Optimized design apply for excavators from 5 tons to 40 tons
- Customized solutions according to your requirement of projects



WIDE RANGE OF JOB APPLICATIONS

Silt, swamp, shallow water operations (less than 1.8m depth)

- Pontoon size reduce **30%**, more flexible travelling in swampy terrains, reduce transportation time by **10%**
- Upgraded pontoon material, overall weight is reduced by **10%**, walking is more flexible, and fuel consumption is lower
- Working efficiency increased by **5%**

Deep water operations (2-5 meters)

- Small pontoon size+ bigger size side pontoon, total width increased by **45%**, no rollover risk in deep water.
- Square platform, more safety, minimum working radius increased by **20%**.

APPLICABLE RANGE

01

Swamp, wetland, water area projects
High efficient and safety operations in pond, river, lake and coastline terrains.



02

Dredging projects
Outstanding dredging performance in soft terrains



03

Environmental services
Efficient landscape and natural environment maintenance.



04

Public relief services
Governmental or fire department flood control, disaster relief operation and maintenance



05

For rental
Used for rental industry, remarkable benefits





EASY TO TRANSPORT

Only one truck is required for short-distance transportation, and the whole machine can be loaded. For long-distance transportation, the chassis needs to be separated and transported, assembly and disassembly takes only 60 minutes



20 years

construction optimized
experience, more suitable for
actual engineering use.

We are a diversified enterprise integrating
design, R&D, and manufacturing.
We combine construction experience and
customer feedbacks into our improvements.
Each optimization is tested by marketing
and approvals from customer. Always aim
to provide better solutions for customers.

Moreover, you can also custom your own
solutions if you need.

Height of chassis is customized

Height of chassis can be modified or
customized according to different construction projects

Track chain made of 40 Cr high strength steel and heat-treated.

Track chains are available in standard
and strength reinforced.

Main pontoon

Designed buoyancy of the pontoon is less
than the weight of the whole, can reach the
bottom for normal operation in shallow water

chain plate use HG785 high strength

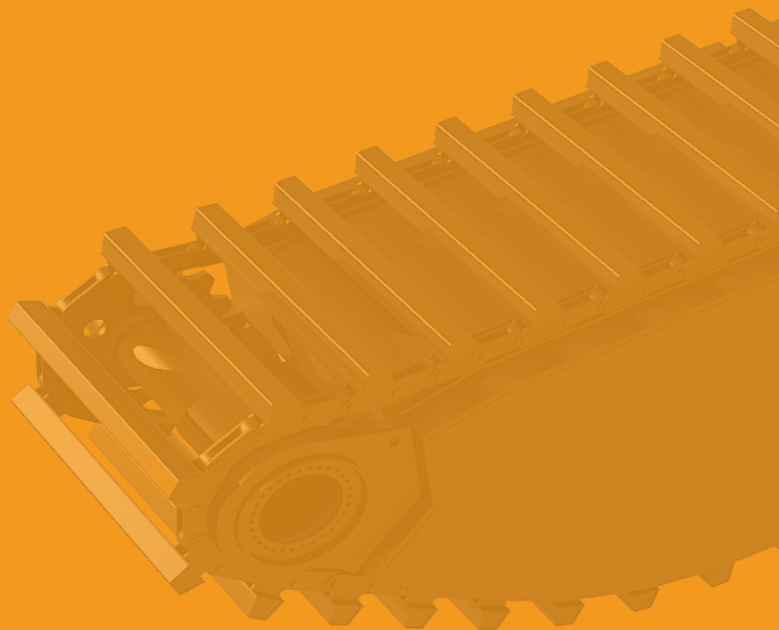
High strength, wear and impact resistance

Extra side Pontoon

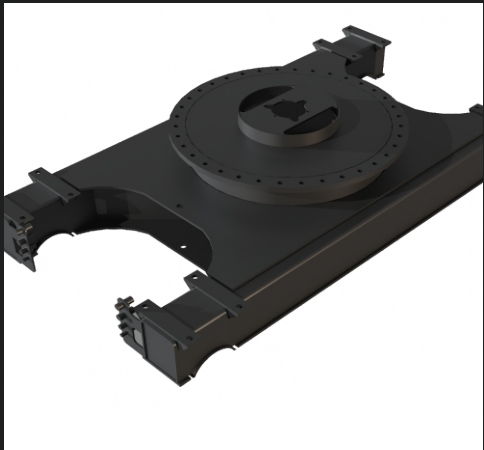
For water depth over 1.8 meters,
extra side pontoon need to be added,
it will take 10 minutes to assemble.

Spud budge

Spud fixed the pontoon at the bottom of
the canal to ensure excavator can work stable
under flowing river conditions.



THE DETAILED PROCESS OF THE PRODUCT



Chassis

The height of chassis can be customized to meet various requirements of construction projects, can be modified according to the original base of excavators.



Chain plated

- Support bars are designed in the chain plate to strengthen the load capacity and reduce the loss on the hard ground
- Increased chain plate, anti-slipped and not easy to bend.
- Size can be customized according to customer's requirement.



Track shoe

Titanium alloy and chromium are optional, lighter and longer life

It can maintain accurate average transmission force, higher transmission efficiency, the chain does not require large tension, the load on the shaft and bearing is small, it will not slip, the transmission is reliable, the overload capacity is strong, and it can better work under low speed and heavy duty conditions.

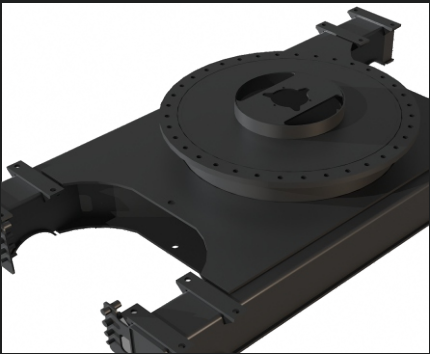


Pontoons

- Two-layer primer, two-layer paint, good anti-rust ability, high value preservation ability
- High strength Q345B steel plate, excellent welding, strong impact resistance, guaranteed wear resistance.
- Wear-resistant strips are added at the chain rail to protect the floating box from damage.

Knock down design convenient for transportation and loading.

60 minutes assembly for whole equipment,8 minutes for extra side pontoon installation.



Chassis



Cross tube



U Shape clips

12mm thickness seamless round tube, for easy assembly from any directions.

Chassis fixed on the cross bar by 8 U-shape clips.

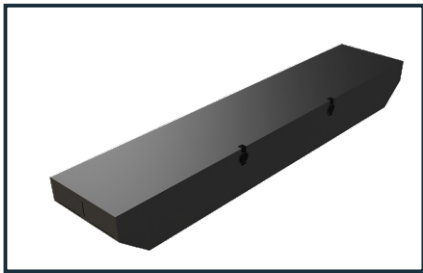
PRODUCT DEMONSTRATION



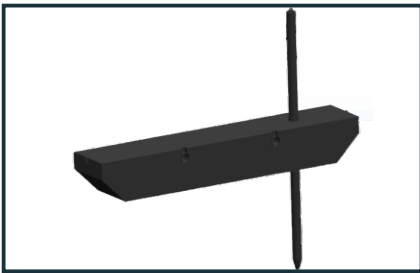
FACTORY SITE VIEW



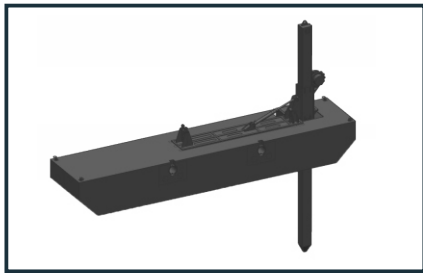
THE DIFFERENCE OF SIDE PONTOONS



▲ Side Pontoon

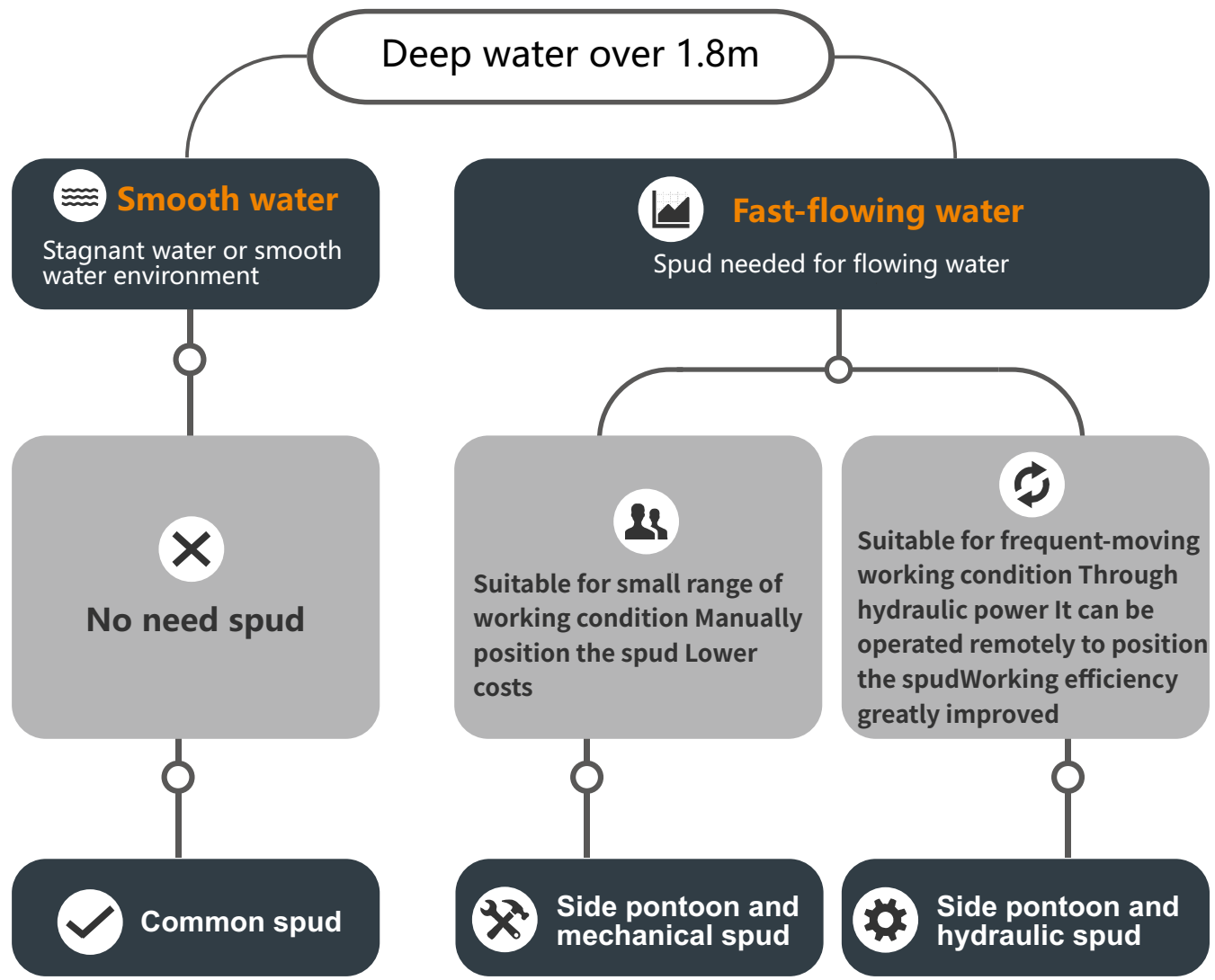


▲ Side pontoon and mechanical spud



▲ Side pontoon and hydraulic spud

HOW TO SELECT SUITABLE SPUD



PRODUCT PARAMETERS



Part No.	Single pontoon size with track	Pontoon weight	Total width	Side floating tank	Side floating tank weight
River55-60	5300×900×1100mm	4.1T	2800mm	4000×700×800mm	0.85T
River75-80	5500×900×1200mm	5.3T	3000mm	5000×800×700mm	1T
River120-150	7000×1200×1600mm	10.67T	3600mm	6500×900×800mm	2.55T
River180-225	7700×1400×1800mm	13.46T	4400mm	6800×1250×1000mm	2.82T
River230-250	8000×1500×1800mm	15.6T	4600mm	6800×1250×1100mm	3.1T
River270-300	8500×1600×1900mm	17.9T	4800mm	7500×1250×1100mm	3.38T
River350-380	8800×1650×2000mm	21.2T		7500×1500×1200mm	3.87T

Material	
Pontoon material	High grade Q345B steel
Track shoe material	Specially produced Q345B steel
Track chains material	High wear-resistant and durable 40Cr steel (Unique design)
Water tight compartment	3 independent compartments